

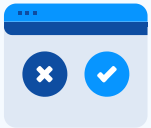
Preseem Plus



For rapidly-growing or larger ISPs who want to proactively improve their subscriber quality of experience and optimize ROI.

Preseem has always been able to tell ISPs where and when QoE issues on their network were popping up. With **Preseem Plus**, however, we can now tell you *why*, in a simple and clear way that gives you detailed insight into your RF layer like you've never had before.

Preseem Plus is designed to make life easier for ISPs by taking highly technical information and making it simple to understand and act on, even for non-technical staff. It's like adding an RF expert to your team at a fraction of the cost. Together with everything that's included in Essentials, with Preseem Plus you can:



Easily see where subscriber and network changes are required with far less time and expertise.



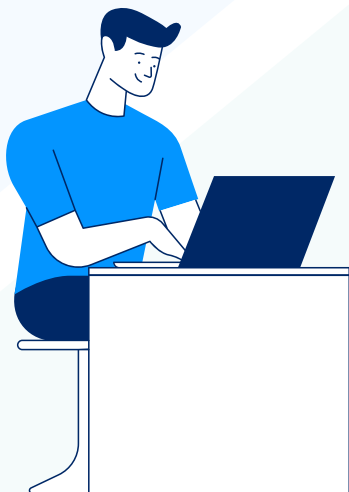
Be proactive for every AP and individual customer radio. Use simple scores to take the manual effort out of troubleshooting and capacity planning.



Identify and solve problems before the customer calls, churns, or worse, tells their friends about their bad experience.



Increase the effectiveness of expert-level staff & empower non-technical staff to identify and solve problems—so much time will be saved!



Move from reactive to proactive management of your fixed wireless network, while improving subscriber QoE and reducing latency, support calls, and operational costs.

**Transform the way you manage
the subscriber experience.**

[preseem.com](https://www.preseem.com)